

State of Rhode Island and Providence Plantations

# Budget



## Fiscal Year 2014

Volume IV – Public Safety, Natural Resources  
and Transportation

Lincoln D. Chafee, Governor

# Agency

---

## Department Of Attorney General

---

### Agency Mission

To represent the State with regard to the investigation, prosecution, and trial of all felony matters, misdemeanor cases, and appellate matters within its jurisdiction.

To provide public protection on behalf of the people of Rhode Island as citizens, consumers, and taxpayers.

To provide criminal history information and descriptive data on demand to federal and local law enforcement agencies seven days a week, 24-hours a day.

### Agency Description

The Attorney General is established under the Rhode Island Constitution as one of the five general officers subject to election by the voters. As the State's central legal agency, the Attorney General is responsible for the prosecution of all felony criminal cases, misdemeanor appeals, and misdemeanor cases brought by state law enforcement action in the various district courts.

The Attorney General initiates legal action to protect the interests of the citizens of Rhode Island regarding compliance with the Open Meetings Act and the Access to Public Records Act, and protection of the public from deceptive business practices and anti-trust violations. Additionally, the Attorney General provides legal advice to state officers and represents all agencies, departments, and commissions in litigation. The State Bureau of Criminal Identification, the central repository for all criminal records in the State, is operated and maintained by the Attorney General.

The Office of Attorney General is divided into four programs: Criminal, Civil, Bureau of Criminal Identification, and General.

### Statutory History

Article IV, Section 1 of the Rhode Island Constitution and R.I.G.L. 42-9 establish the Office of the Attorney General. R.I.G.L. 12-9 relates to extradition; R.I.G.L. 9-31 relates to governmental tort liability; R.I.G.L. 12-12 relates to indictments and information; R.I.G.L. 12-1 relates to criminal identification; and R.I.G.L. 11-57 relates to weapons.

# Budget

## Department Of Attorney General

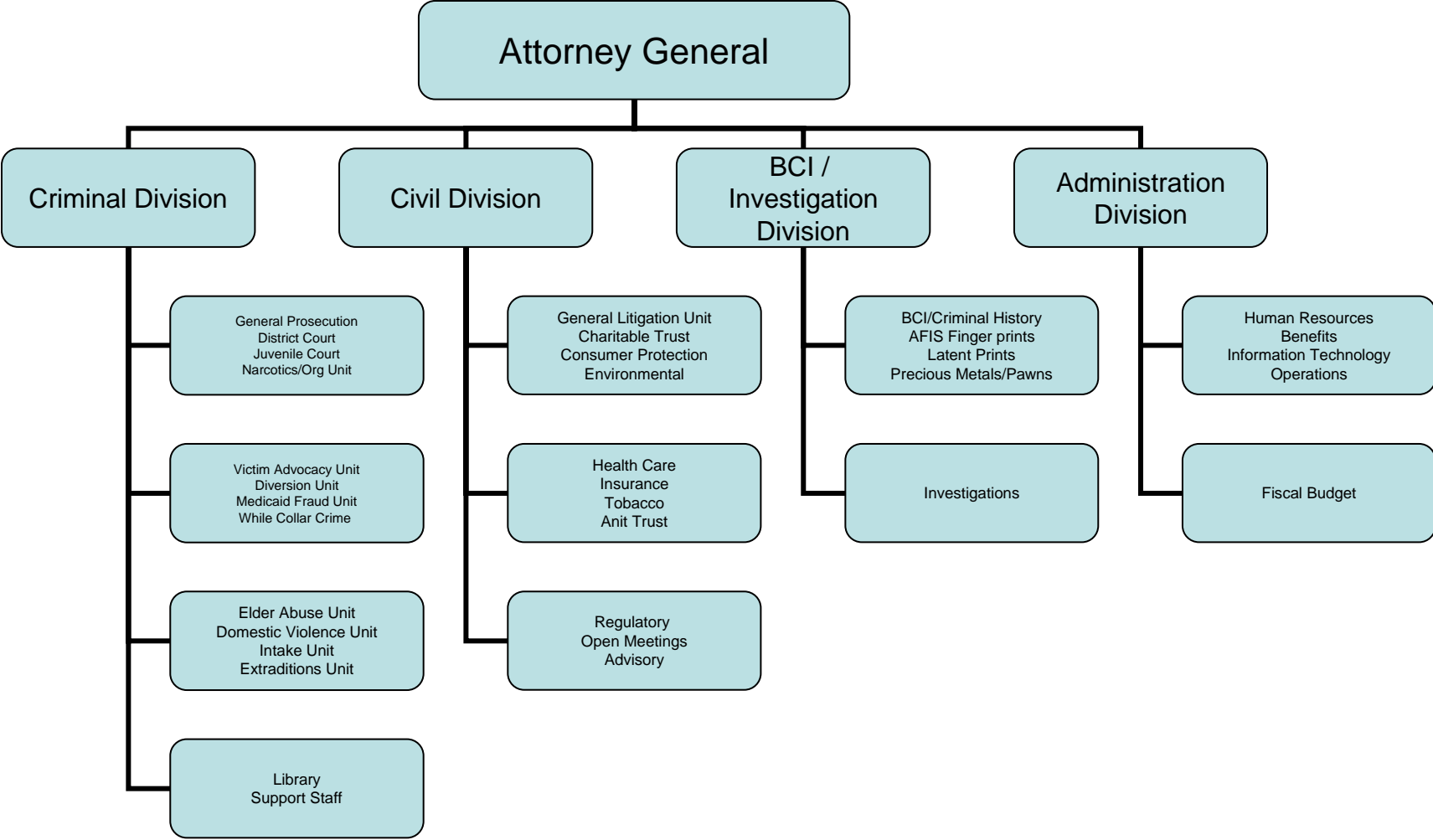
	FY 2011 Audited	FY 2012 Audited	FY 2013 Enacted	FY 2013 Revised	FY 2014 Recommend
<b>Expenditures By Program</b>					
Criminal	14,784,607	15,316,256	16,095,992	19,153,655	20,496,020
Civil	4,808,702	5,355,042	9,683,478	5,693,367	5,618,395
Bureau of Criminal Identification	1,147,431	1,313,779	1,234,405	1,399,691	1,503,119
General	2,877,889	2,612,241	2,996,063	3,224,714	2,771,567
<b>Total Expenditures</b>	<b>\$23,618,629</b>	<b>\$24,597,318</b>	<b>\$30,009,938</b>	<b>\$29,471,427</b>	<b>\$30,389,101</b>
<b>Expenditures By Object</b>					
Personnel	21,615,113	22,953,739	23,605,960	26,327,700	28,292,622
Operating Supplies and Expenses	1,574,460	1,448,772	5,986,350	1,858,448	1,853,590
<b>Subtotal: Operating Expenditures</b>	<b>23,189,573</b>	<b>24,402,511</b>	<b>29,592,310</b>	<b>28,186,148</b>	<b>30,146,212</b>
Capital Purchases and Equipment	429,056	194,807	417,628	1,285,279	242,889
<b>Total Expenditures</b>	<b>\$23,618,629</b>	<b>\$24,597,318</b>	<b>\$30,009,938</b>	<b>\$29,471,427</b>	<b>\$30,389,101</b>
<b>Expenditures By Funds</b>					
General Revenue	20,763,514	22,161,393	23,076,324	22,987,371	23,656,979
Federal Funds	1,788,468	1,475,840	1,483,604	2,644,447	1,608,532
Restricted Receipts	791,992	837,372	5,162,510	3,239,609	5,073,590
Operating Transfers from Other Funds	274,655	122,713	287,500	600,000	50,000
<b>Total Expenditures</b>	<b>\$23,618,629</b>	<b>\$24,597,318</b>	<b>\$30,009,938</b>	<b>\$29,471,427</b>	<b>\$30,389,101</b>
<b>FTE Authorization</b>	<b>230.0</b>	<b>231.1</b>	<b>231.1</b>	<b>233.1</b>	<b>233.1</b>

# The Agency

---

## Attorney General

---



# Personnel

## Department Of Attorney General Agency Summary

	Grade	FY 2013		FY 2014	
		FTE	Cost	FTE	Cost
Unclassified		233.1	15,237,204	233.1	15,413,663
<b>Subtotal</b>		<b>233.1</b>	<b>\$15,237,204</b>	<b>233.1</b>	<b>\$15,413,663</b>
Turnover		-	(\$928,055)	-	(\$953,205)
<b>Subtotal</b>		<b>-</b>	<b>(\$928,055)</b>	<b>-</b>	<b>(\$953,205)</b>
<b>Total Salaries</b>		<b>233.1</b>	<b>\$14,309,149</b>	<b>233.1</b>	<b>\$14,460,458</b>
<b>Benefits</b>					
Payroll Accrual			78,289		80,298
FICA			1,106,497		1,120,905
Retiree Health			1,007,370		1,134,926
Health Benefits			2,591,699		2,778,529
Retirement			3,249,838		3,566,034
<b>Subtotal</b>			<b>\$8,033,693</b>		<b>\$8,680,692</b>
<b>Total Salaries and Benefits</b>		<b>233.1</b>	<b>\$22,342,842</b>	<b>233.1</b>	<b>\$23,141,150</b>
<b>Cost Per FTE Position (excluding Statewide Benefit Assessment)</b>			<b>\$95,851</b>		<b>\$99,276</b>
<b>Statewide Benefit Assessment</b>			<b>\$549,454</b>		<b>\$555,725</b>
<b>Payroll Costs</b>		<b>233.1</b>	<b>\$22,892,296</b>	<b>233.1</b>	<b>\$23,696,875</b>
<b>Purchased Services</b>					
Buildings and Ground Maintenance			1,102		1,132
Legal Services			309,677		269,396
Other Contracts			2,201		2,262
Information Technology			2,940,676		4,249,738
Clerical and Temporary Services			33,572		25,242
Design and Engineering Services			109,194		19,692
Medical Services			38,982		28,285
<b>Subtotal</b>			<b>\$3,435,404</b>		<b>\$4,595,747</b>
<b>Total Personnel</b>		<b>233.1</b>	<b>\$26,327,700</b>	<b>233.1</b>	<b>\$28,292,622</b>
<b>Distribution By Source Of Funds</b>					
General Revenue		211.6	\$21,300,657	212.9	\$21,972,100
Federal Funds		14.5	\$2,078,433	13.2	\$1,546,930
Restricted Receipts		7.0	\$2,948,610	7.0	\$4,773,592
<b>Total All Funds</b>		<b>233.1</b>	<b>\$26,327,700</b>	<b>233.1</b>	<b>\$28,292,622</b>

# The Program

---

## Department Of Attorney General Criminal

---

### **Program Mission**

To represent the State with regard to the investigation, prosecution, and trial of all felony matters, misdemeanor cases brought by state law enforcement, and appellate matters within its jurisdiction.

### **Program Description**

The Criminal Program, with offices in Providence, Kent, Washington, and Newport counties, is responsible for the prosecution of felony cases and misdemeanor appeals from the district courts. The Narcotics and Organized Crime Prosecution Unit is composed of legal and support staff. This unit prosecutes all narcotics and organized crime cases. The Forfeiture Unit handles all asset forfeiture cases. The Information-Charging Unit prepares information for all felony cases filed in Providence County, with the exception of Grand Jury indictments. The Victim/Witness Unit administers a comprehensive assistance program for victims and state witnesses; this unit's existence is mandated by the Victim's Bill of Rights. The Diversion Unit provides alternatives to court prosecution for selected first-time, non-violent felony offenders. The Juvenile Unit is responsible for prosecuting all juveniles charged with felonies by local police and state agencies, and all adults charged with criminal child abuse. The Appellate Unit represents the State in all criminal appeals before the Rhode Island Supreme Court and post-conviction cases filed in federal court. The Medicaid Fraud Control Unit prosecutes fraud and abuse by providers of Medicaid services to Rhode Island and the Welfare Fraud Unit investigates and prosecutes all cases of welfare fraud.

### **Statutory History**

Article IV, Section 1 of the Rhode Island Constitution and R.I.G.L. 42-9 establish the Office of the Attorney General. R.I.G.L. 12-9 relates to extradition; R.I.G.L. 9-31 relates to governmental tort liability; R.I.G.L. 12-12 relates to indictments and information; R.I.G.L. 12-1 relates to criminal identification; and R.I.G.L. 11-57 relates to weapons.

# The Budget

---

## Department Of Attorney General Criminal

---

	2011 Audited	2012 Audited	2013 Enacted	2013 Revised	2014 Recommend
<b>Expenditures By Subprogram</b>					
Operations	14,784,607	15,316,256	16,095,992	19,153,655	20,496,020
<b>Total Expenditures</b>	<b>\$14,784,607</b>	<b>\$15,316,256</b>	<b>\$16,095,992</b>	<b>\$19,153,655</b>	<b>\$20,496,020</b>
<b>Expenditures By Object</b>					
Personnel	13,703,480	14,320,875	14,812,282	17,279,558	19,121,707
Operating Supplies and Expenses	955,066	934,895	1,212,229	1,240,490	1,233,096
<b>Subtotal: Operating Expenditures</b>	<b>14,658,546</b>	<b>15,255,770</b>	<b>16,024,511</b>	<b>18,520,048</b>	<b>20,354,803</b>
Capital Purchases and Equipment	126,061	60,486	71,481	633,607	141,217
<b>Total Expenditures</b>	<b>\$14,784,607</b>	<b>\$15,316,256</b>	<b>\$16,095,992</b>	<b>\$19,153,655</b>	<b>\$20,496,020</b>
<b>Expenditures By Funds</b>					
General Revenue	12,785,939	13,584,191	14,269,909	14,168,459	14,446,868
Federal Funds	1,724,065	1,423,880	1,458,574	2,554,897	1,608,532
Restricted Receipts	274,603	308,185	367,509	2,430,299	4,440,620
<b>Total Expenditures</b>	<b>\$14,784,607</b>	<b>\$15,316,256</b>	<b>\$16,095,992</b>	<b>\$19,153,655</b>	<b>\$20,496,020</b>

# Personnel

## Department Of Attorney General Criminal

	Grade	FY 2013		FY 2014	
		FTE	Cost	FTE	Cost
<b>Unclassified</b>					
ASSISTANT ATTORNEY GENERAL	00845A	1.0	142,736	1.0	142,736
EXECUTIVE ASSISTANT FOR POLICY AND	00843A	1.0	138,166	1.0	138,166
ASSISTANT ATTORNEY GENERAL	00840A	4.0	465,478	4.0	470,147
ASSISTANT ATTORNEY GENERAL	00838A	7.0	690,887	7.0	705,289
ASSISTANT ATTORNEY GENERAL	00836A	1.0	93,762	1.0	93,762
DIRECTOR OF INVESTIGATIONS	00835A	1.0	90,644	1.0	90,644
STAFF ATTORNEY V	00836A	3.0	270,896	3.0	273,867
STAFF ATTORNEY IV	00834A	6.0	597,818	6.0	607,978
STAFF ATTORNEY VI	00836A	1.0	83,292	1.0	87,144
STAFF ATTORNEY III	00832A	3.0	310,535	3.0	312,966
PRINCIPAL AUDITOR	00828A	1.0	72,822	1.0	72,822
STAFF ATTORNEY II	00830A	11.9	846,869	11.9	848,209
STAFF ATTORNEY I	00828A	31.0	2,009,319	31.0	2,047,338
SENIOR LEGAL ASSISTANT	00824A	4.0	242,899	4.0	242,899
SENIOR INVESTIGATOR (ATTORNEY GENERAL)	00826A	8.0	485,563	8.0	493,914
SPECIAL PROSECUTOR INVESTIGATOR	00824A	2.0	118,750	2.0	118,750
SENIOR ECONOMIC CRIME INVESTIGATOR (AG)	00824A	2.0	107,955	2.0	107,955
CONSUMER INVESTIGATOR	00818A	0.6	31,207	0.6	31,207
ASSISTANT CLERK/RESEARCH	00818A	1.0	51,731	1.0	51,731
LEGAL ASSISTANT	00820A	6.0	309,242	5.0	266,684
ADMINISTRATIVE ASSISTANT	05322A	3.0	154,159	2.0	109,881
CASE INTAKE COORDINATOR	00816A	3.0	135,987	3.0	135,987
SENIOR LEGAL SECRETARY	00813A	1.0	45,117	1.0	45,117
CONFIDENTIAL SECRETARY TO ATTORNEY	00816A	1.0	44,653	1.0	44,653
PARALEGAL CLERK	00017A	18.0	886,301	18.0	893,118
SENIOR ADMINISTRATIVE AIDE	00817A	1.0	43,873	1.0	43,873
FAMILY CRISIS AIDE	00814A	2.0	87,081	2.0	87,081
ADMINISTRATIVE AIDE	05315A	1.0	41,271	1.0	41,271
TECHNICAL ASSISTANT	00815A	1.0	41,271	1.0	41,271
INVESTIGATOR/CLERK	00814A	6.0	237,271	6.0	238,493
CLASSIFICATION CLERK	00814A	6.0	235,345	6.0	236,046
LEGAL SECRETARY	00812A	6.0	227,635	6.0	230,263
CONSUMER SPECIALIST	00814A	1.0	36,509	1.0	37,102
DATA ENTRY OPERATOR	00812A	1.0	36,509	1.0	36,509
PRINCIPAL CLERK STENOGRAPHER	00811A	4.0	139,732	4.0	140,935
CHIEF OUT-COUNTIES CLERK (ATTORNEY	00811A	0.6	20,449	0.6	20,476
<b>Subtotal</b>		<b>151.1</b>	<b>\$9,573,734</b>	<b>149.1</b>	<b>\$9,586,284</b>



# Personnel

## Department Of Attorney General Criminal

	Grade	FY 2013		FY 2014	
		FTE	Cost	FTE	Cost
Turnover		-	(572,653)	-	(585,178)
<b>Subtotal</b>		-	<b>(\$572,653)</b>	-	<b>(\$585,178)</b>
<b>Total Salaries</b>		<b>151.1</b>	<b>\$9,001,081</b>	<b>149.1</b>	<b>\$9,001,106</b>
<b>Benefits</b>					
Payroll Accrual			49,227		49,977
FICA			699,599		701,315
Retiree Health			632,000		705,021
Health Benefits			1,729,212		1,828,871
Retirement			2,043,406		2,220,067
<b>Subtotal</b>			<b>\$5,153,444</b>		<b>\$5,505,251</b>
<b>Total Salaries and Benefits</b>		<b>151.1</b>	<b>\$14,154,525</b>	<b>149.1</b>	<b>\$14,506,357</b>
<b>Cost Per FTE Position (excluding Statewide Benefit Assessment)</b>			<b>\$93,677</b>		<b>\$97,293</b>
<b>Statewide Benefit Assessment</b>			<b>\$345,481</b>		<b>\$345,854</b>
<b>Payroll Costs</b>		<b>151.1</b>	<b>\$14,500,006</b>	<b>149.1</b>	<b>\$14,852,211</b>
<b>Purchased Services</b>					
Information Technology			2,710,645		4,219,387
Clerical and Temporary Services			22,349		14,019
Legal Services			4,000		4,120
Other Contracts			1,596		1,645
Buildings and Ground Maintenance			380		392
Design and Engineering Services			1,600		1,648
Medical Services			38,982		28,285
<b>Subtotal</b>			<b>\$2,779,552</b>		<b>\$4,269,496</b>
<b>Total Personnel</b>		<b>151.1</b>	<b>\$17,279,558</b>	<b>149.1</b>	<b>\$19,121,707</b>
<b>Distribution By Source Of Funds</b>					
General Revenue		134.6	\$13,093,288	133.9	\$13,372,596
Federal Funds		14.5	\$1,988,883	13.2	\$1,546,930
Restricted Receipts		2.0	\$2,197,387	2.0	\$4,202,181
<b>Total All Funds</b>		<b>151.1</b>	<b>\$17,279,558</b>	<b>149.1</b>	<b>\$19,121,707</b>

# The Program

---

## Department Of Attorney General Civil

---

### **Program Mission**

To provide cost effective legal representation to the State, its agencies, boards and commissions.

To provide public protection on behalf of the people of Rhode Island as citizens, consumers and taxpayers.

### **Program Description**

The Attorney General of Rhode Island is the State's Chief legal officer for both criminal and civil matters. He is the sole officer charged with conducting the State's legal affairs and he represents the State in all legal proceedings. By law, the Attorney General represents the State, its agencies and employees in the Rhode Island Supreme Court and all lower state courts, institutes actions in state and federal courts whenever warranted, ensures that representation is provided to state officers, employees and agencies in all courts, advises state officers and agencies on legal issues, gives written opinions on legal issues when requested by an appropriate governmental officer, and represents the interests of the people.

The Civil Division of the Department of the Attorney General is comprised of 27 attorneys who work in one or more of the following units to assist the Attorney General in performing duties in the civil arena: Government Litigation Unit, Office of Health Care Advocate, Open Government Unit, Public Utilities Regulatory Unit, Insurance Advocacy Unit, Environmental Advocacy Unit, Antitrust Unit, Consumer Protection Unit, Charitable Trusts Unit, Attorney General's Office of Civil Rights Advocate and the Legal Counsel to the Contractors' Registration and Licensing Board (CRLB).

### **Statutory History**

Article IV, Section 1 of the Rhode Island Constitution and R.I.G.L. 41-9 establish the office of the Attorney General. R.I.G.L. 12-9 relates to extraditions; R.I.G.L. 9-31 relates to governmental tort liability; R.I.G.L. 12-12 relates to indictments and information; R.I.G.L. 12-1 relates to criminal identification; and R.I.G.L. 11-47 relates to weapons.

# The Budget

---

## Department Of Attorney General Civil

---

	2011 Audited	2012 Audited	2013 Enacted	2013 Revised	2014 Recommend
<b>Expenditures By Subprogram</b>					
Operations	4,808,702	5,355,042	9,683,478	5,693,367	5,618,395
<b>Total Expenditures</b>	<b>\$4,808,702</b>	<b>\$5,355,042</b>	<b>\$9,683,478</b>	<b>\$5,693,367</b>	<b>\$5,618,395</b>
<b>Expenditures By Object</b>					
Personnel	4,479,196	5,068,080	5,172,848	5,318,226	5,239,782
Operating Supplies and Expenses	311,183	277,404	4,458,066	340,162	343,634
<b>Subtotal: Operating Expenditures</b>	<b>4,790,379</b>	<b>5,345,484</b>	<b>9,630,914</b>	<b>5,658,388</b>	<b>5,583,416</b>
Capital Purchases and Equipment	18,323	9,558	52,564	34,979	34,979
<b>Total Expenditures</b>	<b>\$4,808,702</b>	<b>\$5,355,042</b>	<b>\$9,683,478</b>	<b>\$5,693,367</b>	<b>\$5,618,395</b>
<b>Expenditures By Funds</b>					
General Revenue	4,291,313	4,825,855	4,888,477	4,884,057	4,985,425
Restricted Receipts	517,389	529,187	4,795,001	809,310	632,970
<b>Total Expenditures</b>	<b>\$4,808,702</b>	<b>\$5,355,042</b>	<b>\$9,683,478</b>	<b>\$5,693,367</b>	<b>\$5,618,395</b>

# Personnel

## Department Of Attorney General Civil

	Grade	FY 2013		FY 2014	
		FTE	Cost	FTE	Cost
<b>Unclassified</b>					
ASSISTANT ATTORNEY GENERAL	00845A	1.0	142,736	1.0	142,736
ASSISTANT ATTORNEY GENERAL	00840A	2.0	231,260	2.0	231,260
ASSISTANT ATTORNEY GENERAL	00838A	8.0	852,678	8.0	857,177
STAFF ATTORNEY V	00836A	1.0	87,258	1.0	91,293
STAFF ATTORNEY III	00832A	5.0	409,323	5.0	411,967
STAFF ATTORNEY II	00830A	4.0	343,245	4.0	347,938
STAFF ATTORNEY I	00828A	6.0	356,232	6.0	371,083
SENIOR LEGAL ASSISTANT	00824A	2.0	109,060	2.0	110,709
LEGAL ASSISTANT	00820A	1.0	52,725	1.0	52,725
OFFICE MANAGER (AG)	00820A	1.0	50,855	1.0	50,855
SENIOR ADMINISTRATIVE AIDE	00817A	1.0	41,784	1.0	41,784
ADMINISTRATIVE AIDE	00815A	1.5	61,906	1.5	61,906
PARALEGAL CLERK	00017A	4.0	161,312	4.0	164,761
CONSUMER SPECIALIST	00814A	1.0	40,191	1.0	40,191
ADMINISTRATIVE AIDE	05315A	2.5	139,591	2.5	141,158
SENIOR LEGAL SECRETARY	00813A	2.0	78,518	2.0	78,518
LEGAL SECRETARY	00812A	1.0	34,944	1.0	35,141
<b>Subtotal</b>		<b>44.0</b>	<b>\$3,193,618</b>	<b>44.0</b>	<b>\$3,231,202</b>
Turnover		-	(220,178)	-	(226,352)
<b>Subtotal</b>		<b>-</b>	<b>(\$220,178)</b>	<b>-</b>	<b>(\$226,352)</b>
<b>Total Salaries</b>		<b>44.0</b>	<b>\$2,973,440</b>	<b>44.0</b>	<b>\$3,004,850</b>
<b>Benefits</b>					
Payroll Accrual			16,284		16,697
FICA			230,326		233,577
Retiree Health			209,081		235,366
Health Benefits			543,952		578,090
Retirement			676,012		741,189
<b>Subtotal</b>			<b>\$1,675,655</b>		<b>\$1,804,919</b>
<b>Total Salaries and Benefits</b>		<b>44.0</b>	<b>\$4,649,095</b>	<b>44.0</b>	<b>\$4,809,769</b>
<b>Cost Per FTE Position (excluding Statewide Benefit Assessment)</b>			<b>\$105,661</b>		<b>\$109,313</b>
<b>Statewide Benefit Assessment</b>			<b>\$114,294</b>		<b>\$115,570</b>
<b>Payroll Costs</b>		<b>44.0</b>	<b>\$4,763,389</b>	<b>44.0</b>	<b>\$4,925,339</b>

# Personnel

## Department Of Attorney General Civil

	Grade	FY 2013		FY 2014	
		FTE	Cost	FTE	Cost
<b>Purchased Services</b>					
Information Technology			219,342		19,342
Clerical and Temporary Services			11,223		11,223
Legal Services			305,677		265,276
Other Contracts			201		201
Buildings and Ground Maintenance			350		357
Design and Engineering Services			18,044		18,044
<b>Subtotal</b>			<b>\$554,837</b>		<b>\$314,443</b>
<b>Total Personnel</b>		<b>44.0</b>	<b>\$5,318,226</b>	<b>44.0</b>	<b>\$5,239,782</b>
<b>Distribution By Source Of Funds</b>					
General Revenue		39.0	\$4,567,003	39.0	\$4,668,371
Restricted Receipts		5.0	\$751,223	5.0	\$571,411
<b>Total All Funds</b>		<b>44.0</b>	<b>\$5,318,226</b>	<b>44.0</b>	<b>\$5,239,782</b>

# The Program

---

## Department Of Attorney General Bureau of Criminal Identification

---

### **Program Mission**

To provide criminal history information and descriptive data on demand to federal and local law enforcement agencies, 24-hours a day, seven days a week.

### **Program Description**

The Bureau of Criminal Identification (BCI) is a repository and central clearinghouse for information on individuals who have been arrested or convicted of crimes in Rhode Island. This information includes criminal history records, fingerprints, and warrant information. The unit operates 24-hours a day, seven days a week. This unit receives and processes requests for records from law enforcement agencies across the country. Additionally, BCI issues and maintains pistol permits, issues security guard licenses, and conducts background checks.

### **Statutory History**

Section 12-1-4 of the Rhode Island General Laws establishes the Bureau of Criminal Identification within the Office of the Attorney General. The duties of this unit are further outlined in Sections 12-1-5 through 12-1-12.

# The Budget

---

## Department Of Attorney General Bureau of Criminal Identification

---

	2011 Audited	2012 Audited	2013 Enacted	2013 Revised	2014 Recommend
<b>Expenditures By Subprogram</b>					
Operations	1,147,431	1,313,779	1,234,405	1,399,691	1,503,119
<b>Total Expenditures</b>	<b>\$1,147,431</b>	<b>\$1,313,779</b>	<b>\$1,234,405</b>	<b>\$1,399,691</b>	<b>\$1,503,119</b>
<b>Expenditures By Object</b>					
Personnel	1,090,078	1,261,561	1,171,455	1,331,123	1,434,849
Operating Supplies and Expenses	54,637	51,486	59,089	61,267	60,969
<b>Subtotal: Operating Expenditures</b>	<b>1,144,715</b>	<b>1,313,047</b>	<b>1,230,544</b>	<b>1,392,390</b>	<b>1,495,818</b>
Capital Purchases and Equipment	2,716	732	3,861	7,301	7,301
<b>Total Expenditures</b>	<b>\$1,147,431</b>	<b>\$1,313,779</b>	<b>\$1,234,405</b>	<b>\$1,399,691</b>	<b>\$1,503,119</b>
<b>Expenditures By Funds</b>					
General Revenue	1,083,028	1,261,819	1,209,375	1,310,141	1,503,119
Federal Funds	64,403	51,960	25,030	89,550	-
<b>Total Expenditures</b>	<b>\$1,147,431</b>	<b>\$1,313,779</b>	<b>\$1,234,405</b>	<b>\$1,399,691</b>	<b>\$1,503,119</b>

# Personnel

## Department Of Attorney General Bureau of Criminal Identification

	Grade	FY 2013		FY 2014	
		FTE	Cost	FTE	Cost
<b>Unclassified</b>					
CHF OF THE OFF OF INVESTIG	00836AA	1.0	89,500	1.0	89,500
DATA PROCESSING SYSTEMS MANAGER	00836A	1.0	80,750	1.0	85,238
ADMINISTRATIVE ASSISTANT	05322A	1.0	60,184	2.0	106,358
AFIS OPERATOR/FINGERPRINT EXPERT	00824A	1.0	59,375	1.0	59,375
LEGAL ASSISTANT	00820A	3.0	185,281	4.0	230,188
SENIOR ADMINISTRATIVE AIDE	00817A	1.0	43,873	1.0	43,873
CLASSIFICATION CLERK	00814A	3.0	121,911	3.0	121,911
DATA ENTRY OPERATOR	00812A	1.0	38,335	1.0	38,335
LEGAL SECRETARY	00812A	1.0	36,504	1.0	37,214
PRINCIPAL CLERK STENOGRAPHER	00811A	4.0	139,301	4.0	141,118
<b>Subtotal</b>		<b>17.0</b>	<b>\$855,014</b>	<b>19.0</b>	<b>\$953,110</b>
Turnover		-	(73,421)	-	(77,838)
<b>Subtotal</b>		<b>-</b>	<b>(\$73,421)</b>	<b>-</b>	<b>(\$77,838)</b>
<b>Total Salaries</b>		<b>17.0</b>	<b>\$781,593</b>	<b>19.0</b>	<b>\$875,272</b>
<b>Benefits</b>					
Payroll Accrual			4,279		4,855
FICA			61,262		68,563
Retiree Health			54,936		68,448
Health Benefits			127,896		164,481
Retirement			177,622		215,548
<b>Subtotal</b>			<b>\$425,995</b>		<b>\$521,895</b>
<b>Total Salaries and Benefits</b>		<b>17.0</b>	<b>\$1,207,588</b>	<b>19.0</b>	<b>\$1,397,167</b>
<b>Cost Per FTE Position (excluding Statewide Benefit Assessment)</b>			<b>\$71,035</b>		<b>\$73,535</b>
<b>Statewide Benefit Assessment</b>			<b>\$30,031</b>		<b>\$33,610</b>
<b>Payroll Costs</b>		<b>17.0</b>	<b>\$1,237,619</b>	<b>19.0</b>	<b>\$1,430,777</b>
<b>Purchased Services</b>					
Information Technology			3,875		3,991
Other Contracts			49		50
Buildings and Ground Maintenance			30		31
Design and Engineering Services			89,550		-
<b>Subtotal</b>			<b>\$93,504</b>		<b>\$4,072</b>
<b>Total Personnel</b>		<b>17.0</b>	<b>\$1,331,123</b>	<b>19.0</b>	<b>\$1,434,849</b>
<b>Distribution By Source Of Funds</b>					
General Revenue		17.0	\$1,241,573	19.0	\$1,434,849
Federal Funds		-	\$89,550	-	-
<b>Total All Funds</b>		<b>17.0</b>	<b>\$1,331,123</b>	<b>19.0</b>	<b>\$1,434,849</b>

1 1.0 FTE shifted from Federal Funds to General Revenue

2 1.0 FTE shifted from Federal Funds to General Revenue



# The Program

---

## Department Of Attorney General General

---

### **Program Mission**

To provide the infrastructure necessary for the efficient operation of the Office of the Attorney General.

### **Program Description**

The General Program provides administrative support to ensure that the department operates efficiently. This program consists of six units.

The Executive Unit consists of the Attorney General, the Deputy Attorney General and support staff. The function of the Executive Unit is to coordinate the efforts of all parts of the department.

The Fiscal Unit is responsible for all financial operations of the department. This includes the preparation of the departmental budget, monitoring and controlling expenditures, and processing all financial paperwork.

The Personnel Unit processes all paperwork regarding hiring, transfers, promotions, and terminations, and monitors payroll records submitted to Accounts and Control. This unit must ensure that all state and federal laws and regulations are upheld, including equal employment opportunities and affirmative action requirements.

The Operations Unit is responsible for purchasing, maintenance and repair of the department's buildings and automobiles, and monitoring the department's telephone and mail systems.

The Management Information System Unit administers and operates the department's computer systems. The system consists of five central processing units, multiple application servers, over 220 desktop computers, and 30 printers. The Attorney General's computer system is linked to the court's computer system and the Rhode Island Law Enforcement Telecommunications System.

The Public Information/Legislation Unit handles all communication with the media, submits legislation on the Attorney General's behalf, and coordinates the Attorney General's education, and community outreach efforts.

### **Statutory History**

Article IV, Section 1 of the Rhode Island Constitution and R.I.G.L. 42-9 establish the Office of the Attorney General. R.I.G.L. 12-9 relates to extraditions; R.I.G.L. 9-31 relates to governmental tort liability; R.I.G.L. 12-12 relates to indictments and information; R.I.G.L. 12-1 relates to criminal identification; and R.I.G.L. 11-57 relates to weapons.

# The Budget

---

## Department Of Attorney General General

---

	2011 Audited	2012 Audited	2013 Enacted	2013 Revised	2014 Recommend
<b>Expenditures By Subprogram</b>					
Operations	2,877,889	2,612,241	2,996,063	3,224,714	2,771,567
<b>Total Expenditures</b>	<b>\$2,877,889</b>	<b>\$2,612,241</b>	<b>\$2,996,063</b>	<b>\$3,224,714</b>	<b>\$2,771,567</b>
<b>Expenditures By Object</b>					
Personnel	2,342,359	2,303,223	2,449,375	2,398,793	2,496,284
Operating Supplies and Expenses	253,574	184,987	256,966	216,529	215,891
<b>Subtotal: Operating Expenditures</b>	<b>2,595,933</b>	<b>2,488,210</b>	<b>2,706,341</b>	<b>2,615,322</b>	<b>2,712,175</b>
Capital Purchases and Equipment	281,956	124,031	289,722	609,392	59,392
<b>Total Expenditures</b>	<b>\$2,877,889</b>	<b>\$2,612,241</b>	<b>\$2,996,063</b>	<b>\$3,224,714</b>	<b>\$2,771,567</b>
<b>Expenditures By Funds</b>					
General Revenue	2,603,234	2,489,528	2,708,563	2,624,714	2,721,567
Operating Transfers from Other Funds	274,655	122,713	287,500	600,000	50,000
<b>Total Expenditures</b>	<b>\$2,877,889</b>	<b>\$2,612,241</b>	<b>\$2,996,063</b>	<b>\$3,224,714</b>	<b>\$2,771,567</b>

# Personnel

## Department Of Attorney General General

	Grade	FY 2013		FY 2014	
		FTE	Cost	FTE	Cost
<b>Unclassified</b>					
DEPUTY ATTORNEY GENERAL (ATTORNEY	08750A	1.0	166,967	1.0	171,433
CHIEF OF STAFF (ATTORNEY GENERAL)	08747A	1.0	126,368	1.0	130,865
PUBLIC INFORMATION OFFICER (ATTORNEY	08745A	1.0	124,118	1.0	124,118
DIRECTOR OF ADMINISTRATION (ATTORNEY	08741A	1.0	119,442	1.0	123,909
ATTORNEY GENERAL	00535F	1.0	115,610	1.0	115,610
EXECUTIVE ASSISTANT COMM & PUBLIC	00835A	1.0	98,149	1.0	98,149
PUBLIC INFORMATION OFFICER	00835A	1.0	94,764	1.0	94,764
EXEC ASST FOR ADMINISTRATION	00G38A	1.0	85,061	1.0	89,559
PROJECT MANAGER	08630A	1.0	78,728	1.0	78,728
DEPUTY DIRECTOR	00832A	1.0	73,966	1.0	73,966
SENIOR LEGAL ASSISTANT	00824A	1.0	62,074	1.0	62,074
ASSOCIATE EXECUTIVE ASSISTANT	00826A	1.0	61,485	1.0	61,485
SENIOR INVESTIGATOR (ATTORNEY GENERAL)	00826A	1.0	60,129	1.0	62,803
AFIS OPERATOR/FINGERPRINT EXPERT	00824A	1.0	57,138	1.0	58,742
PRINCIPAL AUDITOR (ATTORNEY GENERAL)	00825A	1.0	51,598	1.0	53,143
SYSTEMS ANALYST	00818A	1.0	47,420	1.0	47,420
INVESTIGATOR	00822A	1.0	45,448	1.0	46,874
EXECUTIVE ASSISTANT (ATTORNEY GENERAL)	08721A	1.0	43,912	1.0	45,205
LEGAL SECRETARY	00812A	1.0	34,567	1.0	35,166
LEGAL SECRETARY ATTORNEY GENERAL	08711A	2.0	67,894	2.0	69,054
<b>Subtotal</b>		<b>21.0</b>	<b>\$1,614,838</b>	<b>21.0</b>	<b>\$1,643,067</b>
Turnover		-	(61,803)	-	(63,837)
<b>Subtotal</b>		<b>-</b>	<b>(\$61,803)</b>	<b>-</b>	<b>(\$63,837)</b>
<b>Total Salaries</b>		<b>21.0</b>	<b>\$1,553,035</b>	<b>21.0</b>	<b>\$1,579,230</b>
<b>Benefits</b>					
Payroll Accrual			8,499		8,769
FICA			115,310		117,450
Retiree Health			111,353		126,091
Health Benefits			190,639		207,087
Retirement			352,798		389,230
<b>Subtotal</b>			<b>\$778,599</b>		<b>\$848,627</b>
<b>Total Salaries and Benefits</b>		<b>21.0</b>	<b>\$2,331,634</b>	<b>21.0</b>	<b>\$2,427,857</b>
<b>Cost Per FTE Position (excluding Statewide Benefit Assessment)</b>			<b>\$111,030</b>		<b>\$115,612</b>
<b>Statewide Benefit Assessment</b>			<b>\$59,648</b>		<b>\$60,691</b>
<b>Payroll Costs</b>		<b>21.0</b>	<b>\$2,391,282</b>	<b>21.0</b>	<b>\$2,488,548</b>

# Personnel

## Department Of Attorney General General

	Grade	FY 2013		FY 2014	
		FTE	Cost	FTE	Cost
<b>Purchased Services</b>					
Information Technology			6,814		7,018
Other Contracts			355		366
Buildings and Ground Maintenance			342		352
<b>Subtotal</b>			<b>\$7,511</b>		<b>\$7,736</b>
<b>Total Personnel</b>		<b>21.0</b>	<b>\$2,398,793</b>	<b>21.0</b>	<b>\$2,496,284</b>
<b>Distribution By Source Of Funds</b>					
General Revenue		21.0	\$2,398,793	21.0	\$2,496,284
<b>Total All Funds</b>		<b>21.0</b>	<b>\$2,398,793</b>	<b>21.0</b>	<b>\$2,496,284</b>